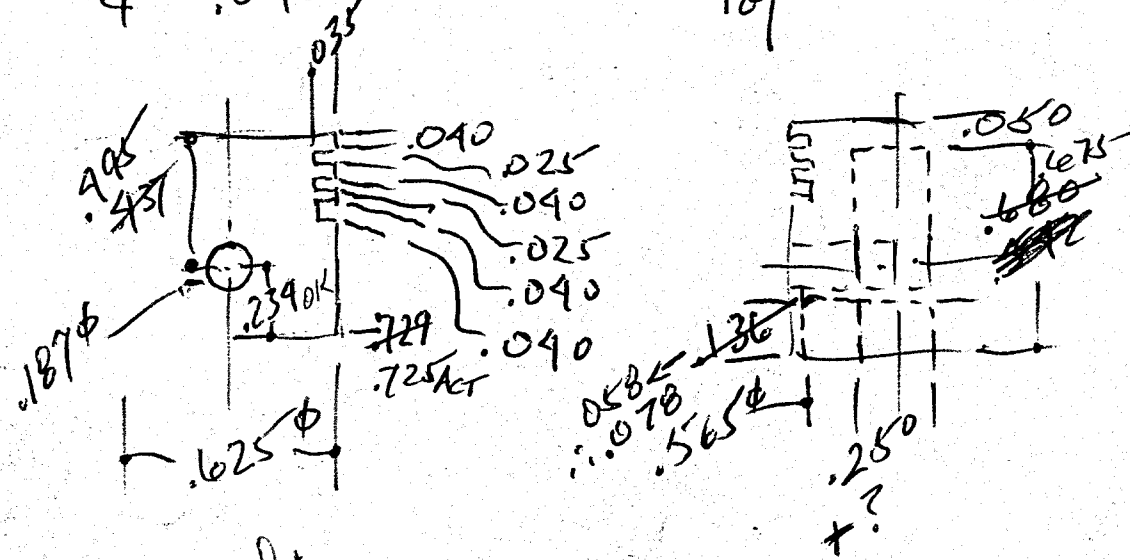


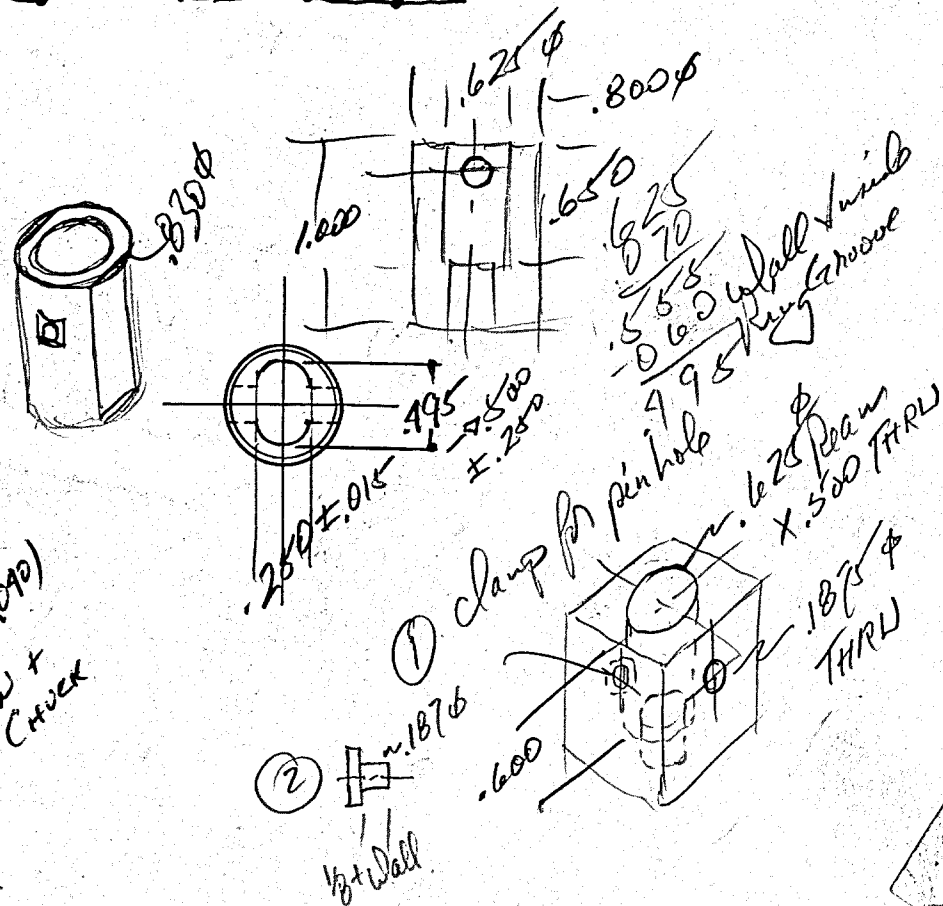
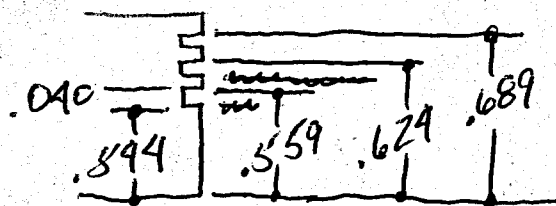
625  $\phi$  x .729  
 PIN = ~~166  $\phi$~~   $\rightarrow$  .156  $\phi$   $\rightarrow$  .187  $\phi$

Use .022 ring groove x 2 of  
 & .040 1 of



1/16 rawls  
 + 1/16 chuck

729  
 125  
 854



25 (.022 + .022)  
 + 15 (.022 + .040)  
 = 7 in +  
 Chuck

① clamp for pin hole  
 ② 1/16 rawls  
 1/16 wall  
 .625 diam  
 x .500 THRU  
 .187  $\phi$   
 THRU