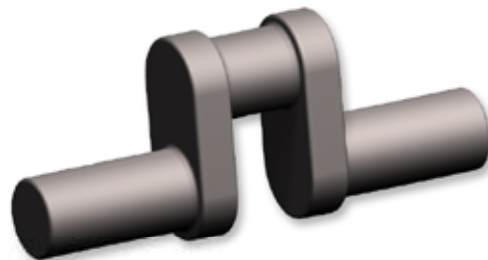


The Crank Calls



President	Don Jones	(510) 812-7006
Secretary	Carl Wilson	(650) 967-7715
Treasurer	Ken Hurst	(707) 257-2481
Events	Ken Hurst	(707) 257-2481
Tech Topics	Paul Bennett	(510) 247-3106
Editor	Larry Zurbrick	(408) 448-5752
Printer	Larry Zurbrick	(408) 448-5752

dj712@sbcglobal.net
talleyho123@yahoo.com
icengine@comcast.net
icengine@comcast.net
paulbennett01@comcast.net
lz_m57@pacbell.net
lz_m57@pacbell.net

September 2009

MEMBERSHIP

\$25.00 US

Contact

Ken Hurst at
(707) 257-2481

NEXT MEETING

September 19, 2009 at
Chabot College, building 1400
25555 Hesperian Blvd, Hayward 94545
Doors open at 9 AM
Meeting Starts at 10 AM

Upcoming Events

September 19-20: GEARS, Kliever Amory,
Portland, OR

MEETING NOTES

8-15-09

Carl Wilson

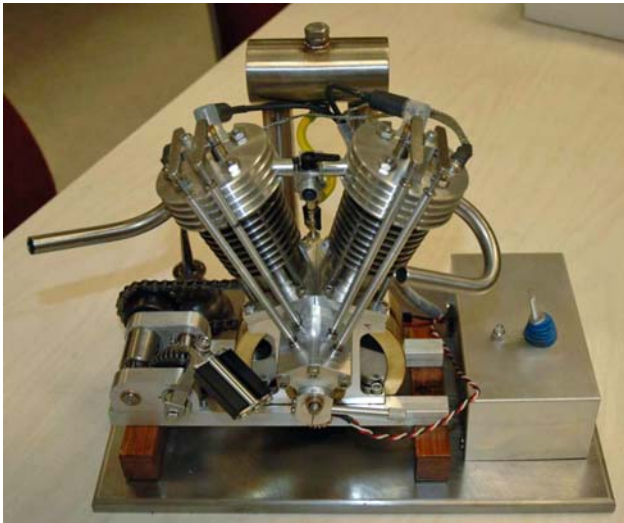
Larry Zurbrick brought 3 guests, a brother-in-law and his two sons: Kevin, Ryan, and Daniel McHale who were visiting from Western New York State. Bob Wolff, owner of Acme Disc Grinding in Santa Clara, CA and our Tech Topic presenter also signed the guest register.

Paul Bennett is ill and in the hospital. At the time of the meeting he had asked that only family members and close friends visit him. Please take the time to write a note to Paul expressing your care and concern.

Jerry Howell, long-time vendor of engine plans, kits, and parts passed away on August 29, 2009. Bay Area Engine Modelers extends condolences to the family of Jerry.

First Pop Honors went to Lon Keeth with Hoglett. Lon said that it started and ran easily after about a year and a half of building. Congratulations on a very fine first build.





Treasurer's report: We have 83 members and current assets of about \$8000.

The final accounting for the 2009 Western Engine and Model Exhibition was posted at this meeting. We were in the red again, but only \$50. The show managers declare this a success. The managers thank Mike Rehms for the advertising in Model Engine Builder Magazine; United Rentals, Napa, for the use of the ventilating fan and air compressor; Leonard Higgins for diesel fuel; Sandra Croyle (Dwight Giles' daughter) for the exhibitor badges and souvenirs. Also Skip Adrian, vendor of the laser edge finders, donated four of them to the club. The club directors will determine what use we will make of them. Thanks, Skip.

Joe Landau has posted the 2009 WEME show photos to <http://baemclub.shutterfly.com/>. There is a small file of photos for which Joe did not have full information. Please visit Shutterfly and assist him in identifying the models.

John Palmer reminds us that the Santa Clara Valley Model T Club is sponsoring its 9th Annual Antique Autos in History Park. This free event is noon to 5 PM, Sunday September 13, at the San Jose Historical Museum, Kelly Park on Senter Road at Phelan Ave.



Dwight Giles presented these brass tubes with spear point closed ends. Dwight said that the details of their forming will be published in a forthcoming article in Model Engine Builder.



This is Jim Piazza's second mock-up of rotors for a Roots blower. Several months ago Jim showed a three lobed pair based on involute curves. This two lobed pair uses 7 different circular arcs joined together to form one quarter of the profile. This was drawn with a CAD program and a little work with the mirror command yielded a complete profile to send to his CAD-CAM program. A bit of time on the CNC mill and *voila*, a pair of rotors. The mesh of these rotors is sufficiently close that the leakage path between them is minimized and tip seals are not ordinarily required.



Jaime Quevedo and Paul Bennett are working on 3 builds of the Wallaby, an in-line 2 cylinder, overhead valve push rod engine boasting 29 cc. This engine was originally designed by Edgar Westbury for his IC powered locomotive "1831." Updated in 1962 it became the Wallaby, suitable for a wide range of applications. Jaime and Paul decided to change the head to incorporate phosphor bronze valve cages with 90 degree (sharp edge) valve seats. Jaime notes that the 2 piece silver-soldered valves – 1/8" drill rod stems silver soldered to stainless steel heads – seat well. The ports are hand machined with a die grinder running a small burr.

TECH TOPIC



Bob Wolfe, owner of Acme Disc Grinding in Santa Clara, volunteered to talk about double disc grinding. He uses 1950's vintage manual machines to grind a variety of parts square, parallel, or both to tolerances of 0.0005" to 0.001". This process is particularly useful as a second operation on saw cut pieces of bar stock material to prepare them for further machining in fixtures. It is also a finishing process.

Let's build a double disc grinder with words: start with two 20" diameter grinding wheels about 2" thick standing vertical and facing each other. Each wheel has its own spindle and motor, and they can rotate in the same or opposite directions. A work piece carrier fixture, shaped for each work piece, is located in the adjustable width space between the wheels. The fixture swings in that space, carrying the work piece, which is simultaneously ground on both faces presented to the wheels. The adjustment of the space between the wheels controls the dimension being ground.

<http://www.youtube.com/watch?v=MB8dd3r7qi>
 A shows double disc grinding a small knife sharpening stone.

FOR SALE

2) Eupto 18 drawer parts cabinets, 13 5/8" hi x 34 1/4" w x 12" dp \$25 ea

4 drawer parts cabinet, 14 3/4" hi x 20 1/4" w x 12 1/2" dp, 24 compartments each drawer, \$25

Atlas 6" lathe, 18" centers, well tooled \$750

Stark #4 1/2 toolmakers lathe, 9" swing x 20" centers, well tooled including collets to 3/4" \$350

Pratt & Whitney #3 toolmakers lathe, 7" swing x 18" centers, collets, a project lathe \$75

Lewis 10" shaper \$500

Floor model die filer \$150

Hammer punch and assorted punches and dies
\$25

3 HP electric motor, 1 ph, 120/240v, 1740 rpm
\$100

Mimik hydraulic tracer, Series 7000, 1 ½”
stroke \$200

Brown and Sharp cast iron surface plate, 18” x
24” \$25

Welding table ½” thick x 26” x 36” x 37” high
\$25

Steel layout plate: 1 ¼” thick x 15 ½” dia,
Blanchard ground \$10

Cole’s Power Models: Large hit-n-miss engine,
1 ¼” bore x 1 7/8” stroke. Castings and dwgs

Stuart Models steam engine #7A, 1” bore x 1”
stroke, includes reverse gear castings

Call or e-mail for details
Carl Wilson
650-967-7715
talleyho123@yahoo.com